

Pike

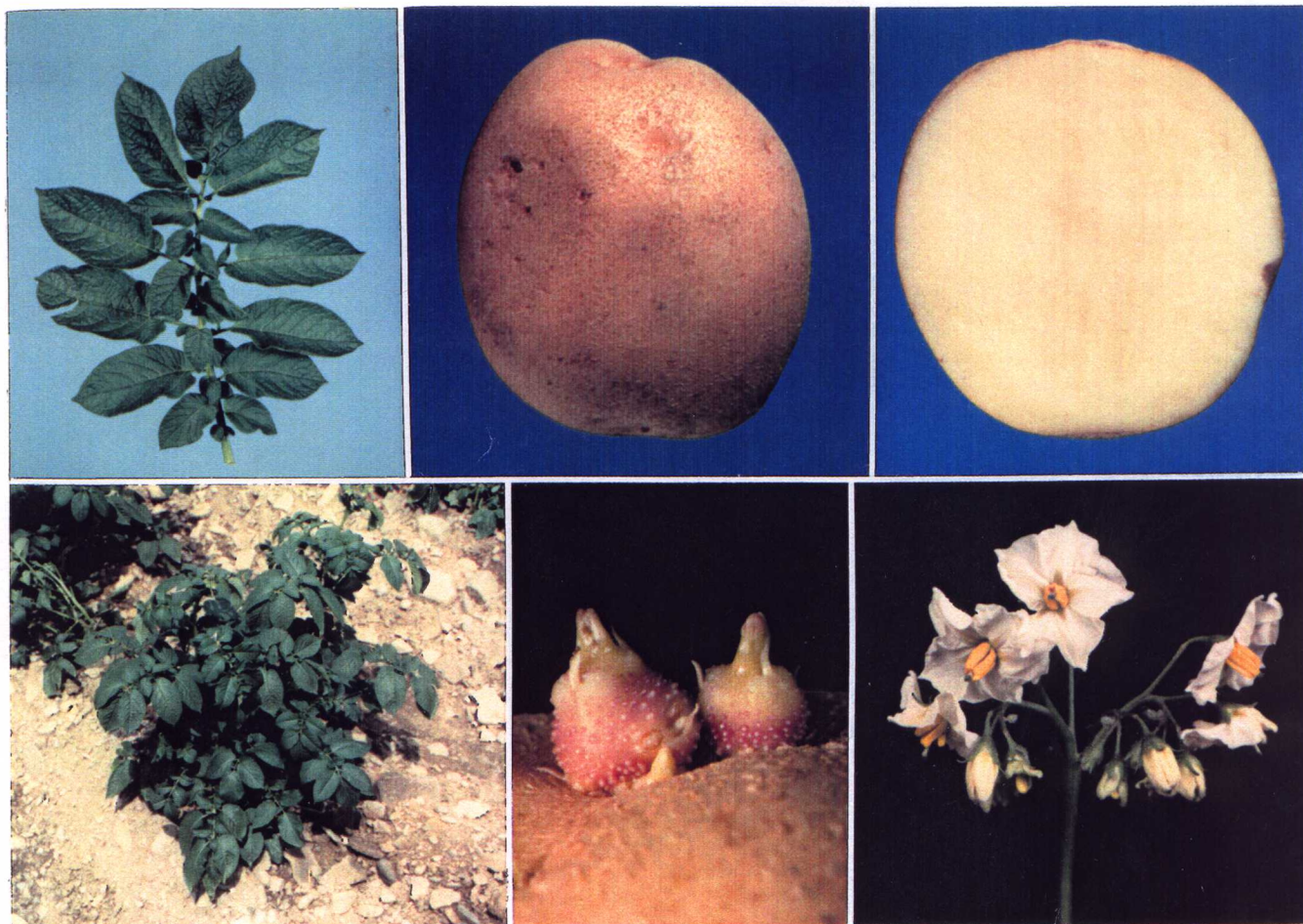
Released by the New York State College of Agriculture and Life Sciences at Cornell University to New York Foundation Seed Growers in 1995.

Pedigree: The cross was made in 1981. Allegany was the female parent and Atlantic was the pollen parent. Pike was evaluated first as NYE55-35.

Market Features: Pike chips well from 45° storage without reconditioning. The specific gravity is equal to that of Atlantic and Snowden. The dormancy is about two weeks longer than Atlantic or Monona. Textured skin like Superior, smoother than Snowden. Spherical tuber shape. Shallow eyes.

Production Features: Mid to late season maturity, earlier than Snowden. Yield of US #1 tubers in New York trials is equal to Atlantic and Snowden and greater than Monona. Tends to set heavy with small tuber size. Performs best at 10 inch spacing and 150 lb. N. Less hollow heart than Snowden and Atlantic. Very few pickouts and internal defects.

Reaction to Diseases: Resistant to the golden nematode. Very resistant to scab, comparable to Superior.



Developed with support from New York State Agriculture and Markets, USDA/ARS, USDA/APHIS, USDA/CSREES, New York and Pennsylvania Potato Growers. Evaluation assisted by NE107.